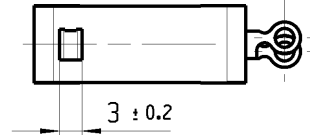
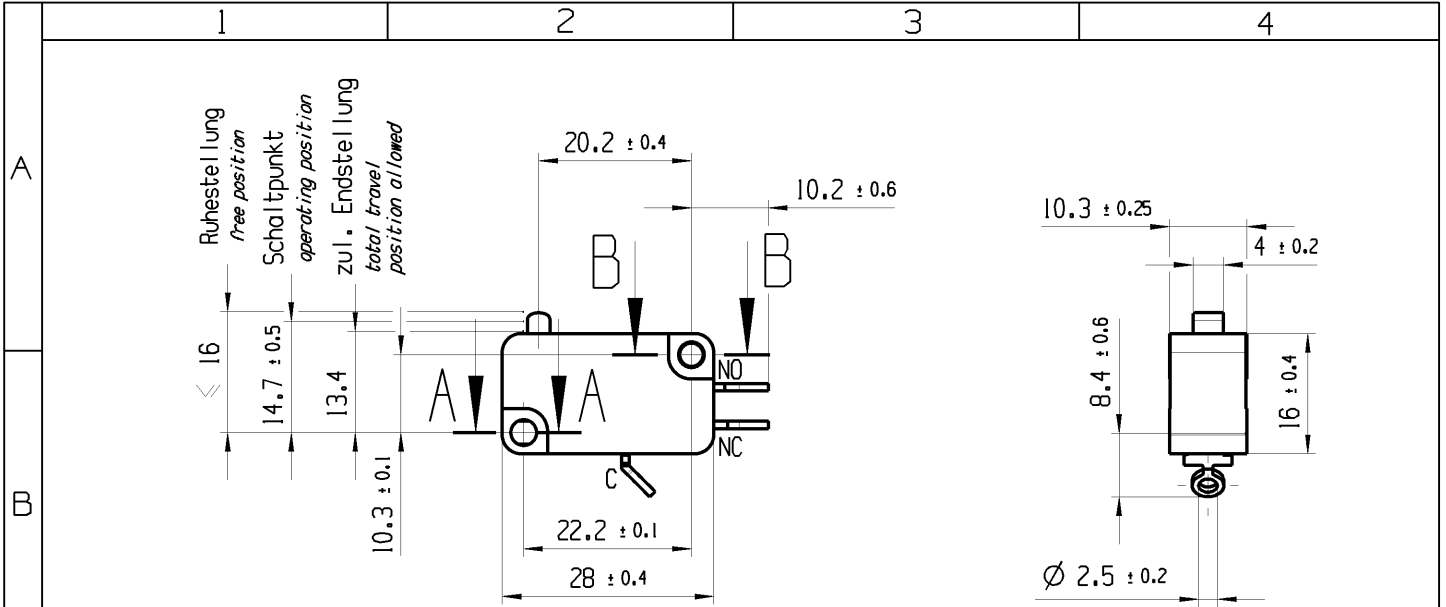


THIS DRAWING IS THE EXCLUSIVE PROPERTY OF MARQUARDT. WITHOUT THEIR CONSENT IT MAY NOT BE REPRODUCED OR GIVEN TO THIRD PARTIES.

CONFIDENTIAL

VERTRAULICH

Alle Rechte bei Marquardt, auch fuer den Fall von Schutzrechtsanmeldungen. Jede Veruegungsbefugnis, wie Kopier- und Weitergaberecht, bei uns.



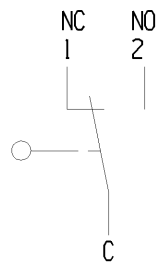
A-A  
2:1

B-B  
2:1

Aufschrift  
marking

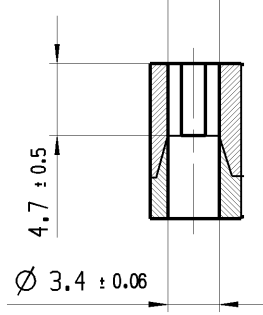
1004 µ T100  
6(2.5) /250~50E3 05

4A 125V AC 1/6HP  
4A 250V AC 1/6HP  
R5

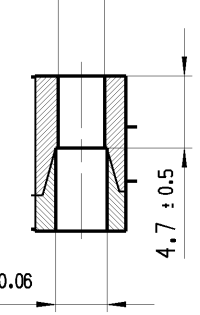


Herstellort / -jahr / -woche  
date code of manufacture:  
place / year / week

3.35 ± 0.05 x 3.08 ± 0.06



Ø 3.08 ± 0.06



Wechsler 1-polig  
single pole changeover  
Schalt-Betaetigungskraft 0.2 bis 0.6 N  
actuating force 0.2 up to 0.6 N  
Differenzweg ≤ 0.3 mm  
movement differential

fuer Form und Lage FOR SHAPE AND LOC.	⊙ =	Allgemeintoleranzen UNTOLERANCED DIMENSIONS				Pause COPY	Blatt SHEET 01	TYP K	Zeichn./DRAWING NO. 10040402	Index 9
	fuer Winkel FOR ANGLE ± 2	PROJEKTION	Abmasse und Nennmassbereiche Angaben in mm	Laenge LENGTH	Radial RADII					
		⊕	0-6 ± 0.1 ± 0.2	>6-15 ± 0.15 ± 0.3	>15-30 ± 0.2 ± 0.5			SCHNAPPSCHALTER		
			ALL DIMENSIONS ARE IN MILLIMETRES	>30-70 ± 0.3	>70-120 ± 0.4			snap action switch		
				>120 ± 0.8	± 10%			Ersatz fuer/REPLACEMENT OF Zg.gl.Nr.v.17.03.2000		
g	85442	02.10.13	BRC					CAD: NX V6.0		
r	29115	17.03.00	PFU					gez./DRAWN BY 12.06.13 BCY gepr./CHECKED BY		
e	21670	11.08.92	BLE					MARQUARDT		
Ausg. ISSUE	Aenderung REVISION	gez. DRAWN BY	Ausg. ISSUE	Aenderung REVISION	gez. DRAWN BY					